



INDEPENDENCE WATER & SANITATION DISTRICT

c/o Special District Solutions, Inc.

2370 Antelope Ridge Trail

Parker, CO 80138

303-662-1999 x-1

www.IndependenceDistricts.com

Residential Meter Request, Installation, and Inspection Process

The Independence Water & Sanitation District has developed the following process for obtaining residential water (potable and irrigation) meters.

1. Builder submits a request form (attachment #1) to the District's Manager for all residential potable and irrigation water service meter requests. Builder must submit a request form for each address requiring potable and irrigation water meter installations. Following verification of payment of Tap Fees, the District Manager will contact the District's Operator to schedule the requested meter installations.
2. Builder is required to pay for the water meters and associated equipment, and inspection fee. Payments will be made to the District. Payment is due when the request form is submitted.
3. For Potable Water Meters: The domestic plumber will tie into the water service stub, run the potable water line into the house and install a yoke to accommodate the meter (reference the District's Rules and Regulations). Builders will set the residential service in accordance with District standards. The potable water meter will be installed inside the basement of the home by the District's Water System Operator, per the attached detail (attachment #2). If a "jumper" was previously installed during construction, it will be removed and replaced by the meter when construction is complete and ready for final inspection.
4. For Residential Irrigation Water Meters: The irrigation water meter will be installed outside the home per the attached detail (attachment #3). The meter pit will be set in the yard with a 12" stub out of the pit to which the landscaper will have to install a Stop and Waste Valve (for seasonal drainage of the line). The service line will then be run to the irrigation valve box. Builders will set the residential irrigation service in accordance with District standards. Per Colorado Department of Public Health and Environment Regulation 84, the irrigation service line shall NOT be run into the home.



If a “jumper” was previously installed during construction, it will be removed and replaced by the meter when construction is complete and ready for final inspection.

5. After the meters are installed, the District’s Water System Operator will prepare documentation that the meters were installed and tested. At that time, the District will establish a billing account for the property.

If the Builder has questions about this process, please contact the District Manager at: kurt@SpecialDistrictSolutions.com or 303-662-1999 x-1



ATTACHMENT #1

METER SET REQUEST FORM



INDEPENDENCE WATER & SANITATION DISTRICT

c/o Special District Solutions, Inc.
2370 Antelope Ridge Trail
Parker, CO 80138
303-662-1999

www.IndependenceDistricts.com

Potable and Irrigation Meter Set Request

Send to: info@specialdistrictsolutions.com

Date of Request:

Property Address:

Potable Water Meter:

Irrigation Meter:

Tap Fees Paid: (to be verified by District Management)

Meter, Related Equipment, & Inspection Fees Paid:

Date Meter(s) Installed:

Potable Water Meter Serial Number:

Initial Meter Reading:

Irrigation Meter Serial Number:

Initial Meter Reading:

Installation Completed and Inspected By:

Date Billing Account Established:

Meter Cost detail on Next Page



Meter Cost Detail:

3/4" Potable & 3/4" Irrigation Meter Set – \$335.00
(includes LTE Cellular endpoints)

Irrigation Meter Lid – \$ 25.00

Meter Equipment Costs - \$360.00

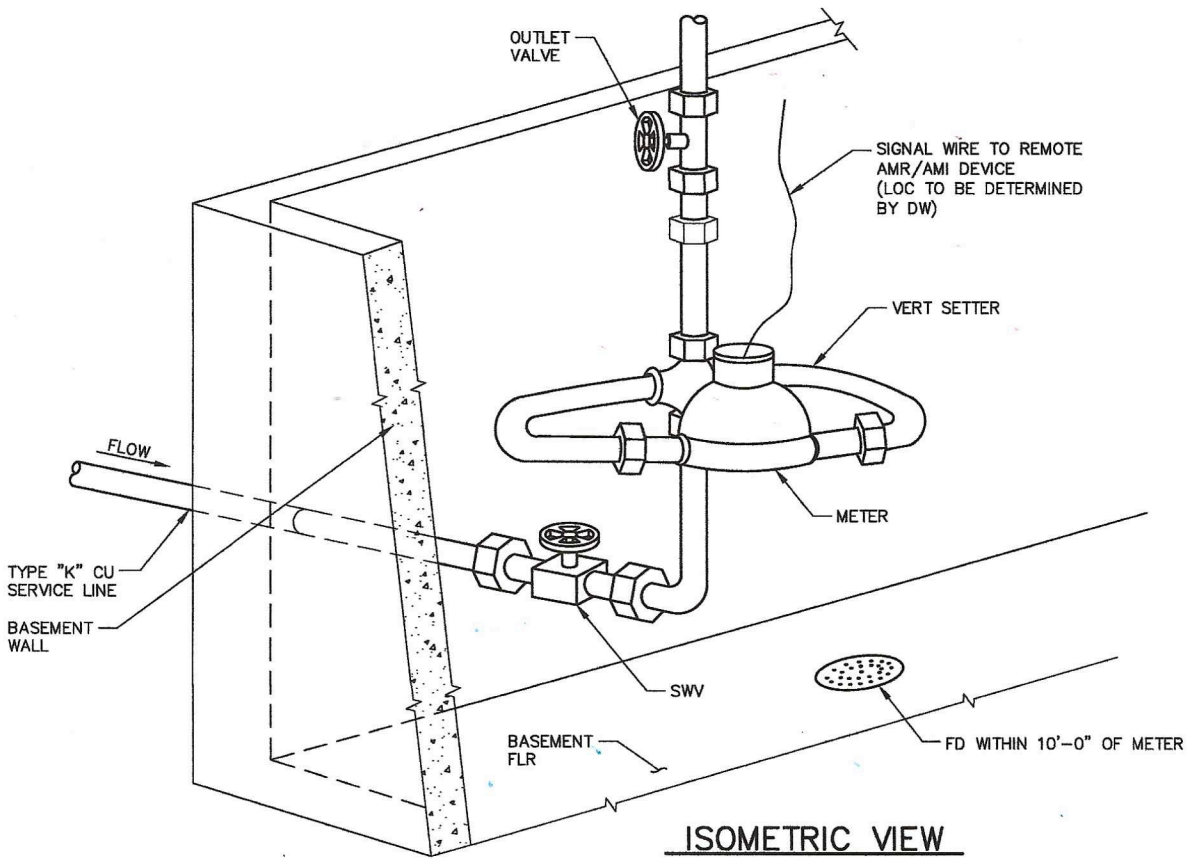
Inspection of Water Line Installations - \$160.00

Total due for Meter Set and Inspections - \$520.00

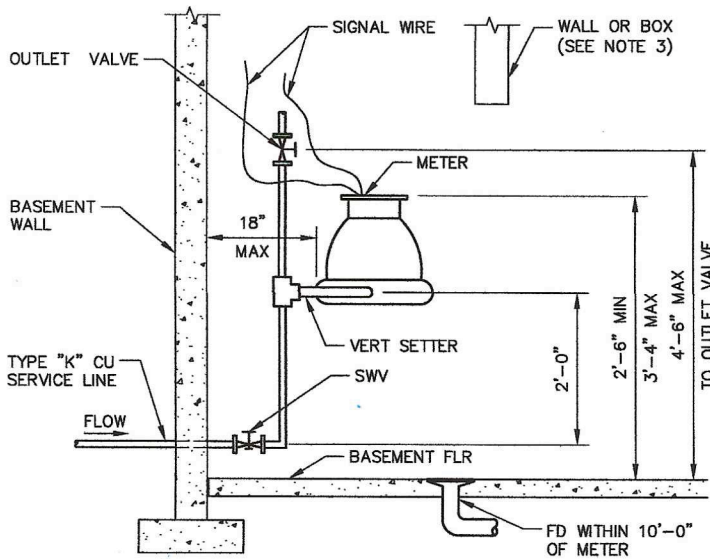


ATTACHMENT #2

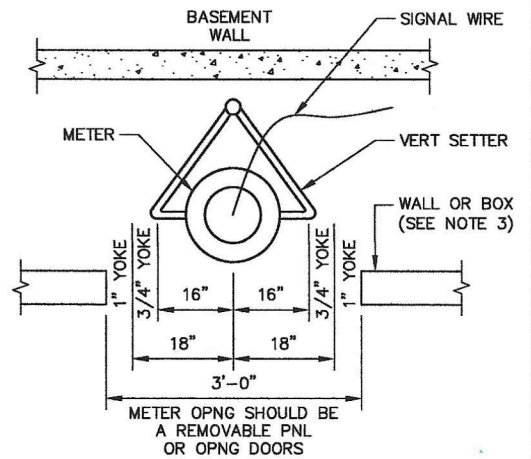
POTABLE WATER METER INSTALLATION



ISOMETRIC VIEW



ELEVATION



PLAN

ERRATA 2

NOTES:

1. THE METER SHALL BE PROTECTED FROM FREEZING AND DAMAGE.
2. NO BENDS, FITTINGS, CONNECTIONS, OR CHANGES IN PIPE SIZE ARE PERMITTED ON THE SERVICE LINE FROM THE CORPORATION STOP TO THE METER OUTLET VALVES EXCEPT AS SHOWN.
3. IF THE METER IS BOXED IN OR PLACED BEHIND A WALL, PROVIDE AN ACCESS OPENING 36-INCHES WIDE FROM ABOVE THE OUTLET VALVE TO THE FLOOR.
4. VALVES SHALL BE ACCESSIBLE FROM THE OPENING.
5. METER SHALL BE CENTERED IN THE OPENING.

**INSIDE SETTING FOR EXISTING
3/4" & 1" METER WITH AMR**

Scale: NONE Date: January 2020

Drawn: RLB Ck:

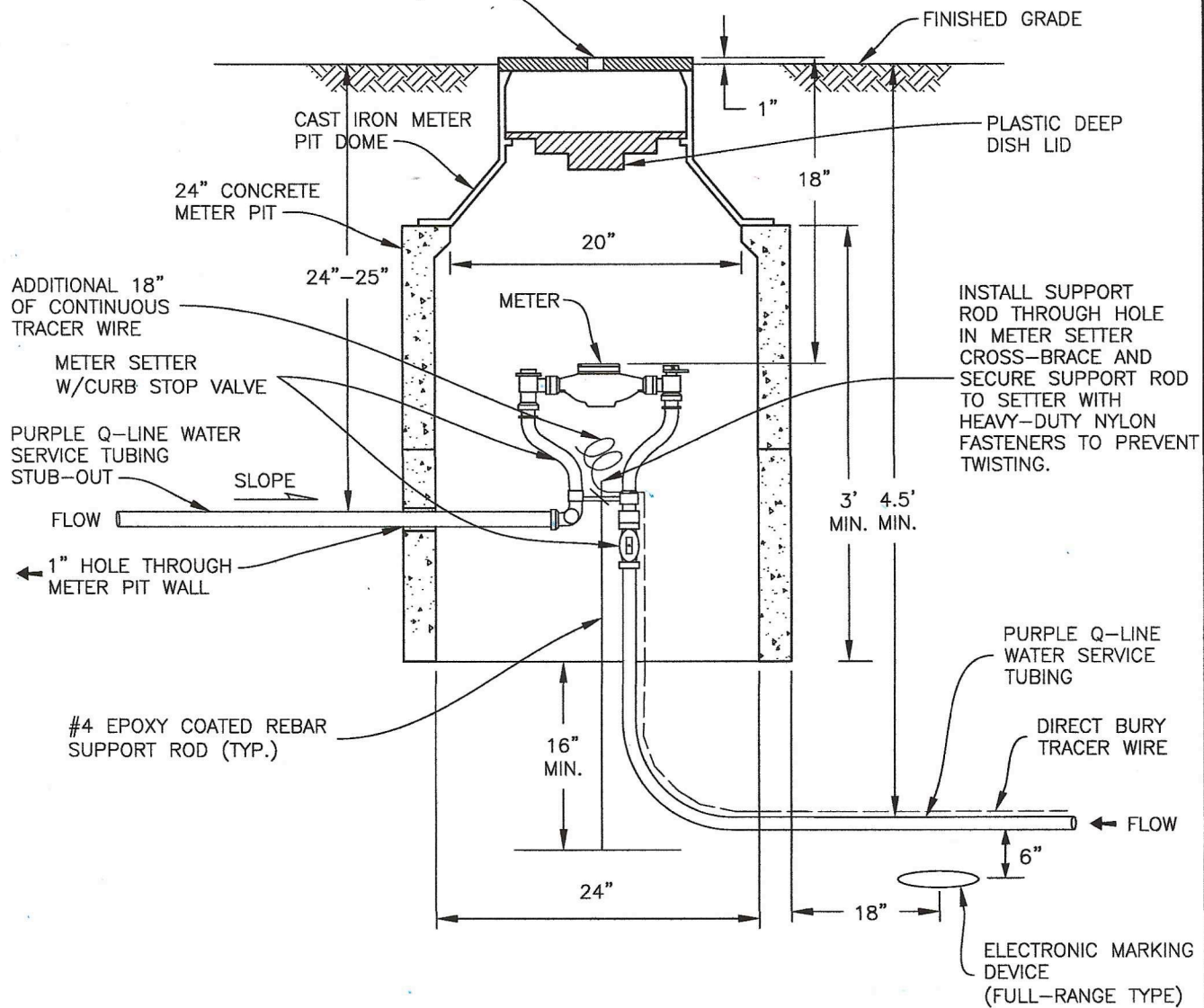
Approved:



ATTACHMENT #3

IRRIGATION WATER METER INSTALLATION

CAP-TYPE METER DOME COVER WITH 1-3/4" HOLE CENTERED IN LID AND THE WORD "IRRIGATION" CAST ON THE COVER. COVER SHALL BE SECURED WITH A PENTAGON NUT MEASURING 27/32".



NOTES:

1. THE INNER FROST LID SHALL BE A PLASTIC DEEP DISH LID WITH PRE-DRILLED DRAIN HOLE.
2. IN LIEU OF A 24" DIAMETER CONCRETE METER PIT, A 36" HIGH, 24" DIAMETER PLASTIC PIT WITH 20" DIAMETER TOP OPENING WILL BE ACCEPTABLE. PLASTIC BASES (HALF-INCH MIN. WALL THICKNESS) SHALL BE IN CONFORMANCE WITH THE DISTRICT'S STANDARD SPECIFICATIONS. 48" HIGH METER PITS MAY ALSO BE USED.
3. TRACER WIRE SHALL BE TERMINATED IN EACH METER PIT BY WRAPPING THE WIRE THREE TIMES AROUND THE METER SETTER CROSS-BRACE.
4. METER SETTER SHALL INCLUDE A LOCKABLE ANGLE BALL VALVE AND DUAL CHECK VALVE ON DOWNSTREAM SIDE OF SETTER.

REVISIONS:

IRRIGATION WATER METER PIT
1 3/4" SIZES